

# State of Wyoming Corner Record

(In compliance with the CORNER PERPETUATION AND FILING ACT, Wyoming Statutes, 1977, Section 36-11-101, et. seq., and the Rules and Regulations of the Board of Registration for Professional Engineers and Professional Land Surveyors)

Reverse side of this form may be used if more space is needed.

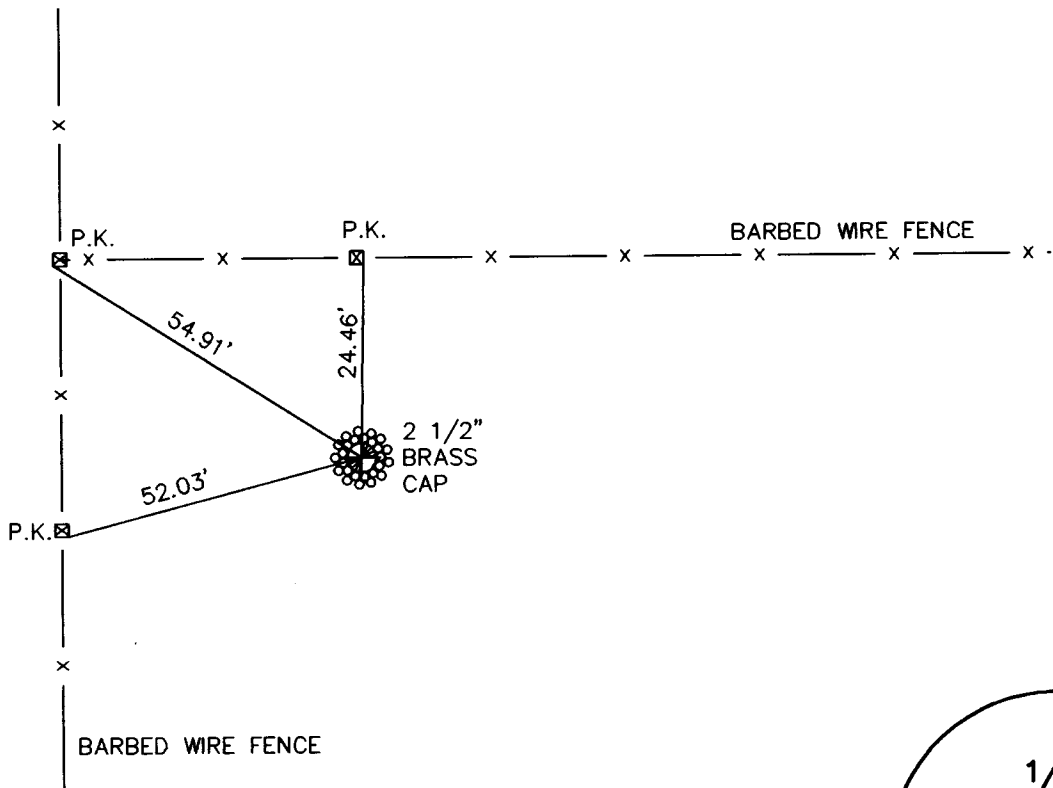
Record of original survey and citation of source of historical information (if corner is lost or obliterated). Description of corner monumentation evidence found and/or monument and accessories established to perpetuate the location of this corner. Sketch of relative location of monument, accessories, and reference points with course and distance to adjacent corner(s) (if determined in this survey). Method and rationale for reestablishment of lost or obliterated corner.

GLO RECORD: UNKNOWN

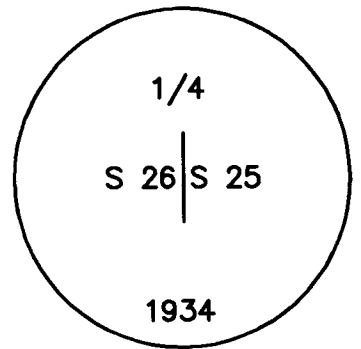
MONUMENT FOUND: FOUND A 2 1/2" GLO BRASS CAP SURROUNDED BY A MOUND OF STONES.  
CAP MARKED AS SHOWN BELOW.

MONUMENT SET: NONE

REFERENCES: P.K. NAILS IN FENCE POST.



LARAMIE COUNTY CLERK  
 CHEYENNE, WY.  
 '96 FEB 15 AM 9 20  
 177378



Date of Field Work: 6-5-95 Office Reference: 95118

**CROSS INDEX DIAGRAM**

A	1	2	3	4	5	6	7	8	9	10	11	12	13	14	15	16	17	18	19	20	21	22	23	24	25	A
B																										B
C		6			5				4					3					2							C
D																										D
E																										E
F																										F
G			7																							G
H																										H
J																										J
K																										K
L																										L
M																										M
N																										N
O																										O
P																										P
Q																										Q
R																										R
S																										S
T																										T
U																										U
V																										V
W																										W
X																										X
Y																										Y
Z																										Z

Firm/Agency, Address

**STEIL SURVEYING SERVICES, LLC**

**1102 WEST 19th STREET**

**CHEYENNE WY 82001**

Telephone Number: **(307) 634-7273**

This corner record was prepared by me or under my direction and supervision.

SEAL & SIGNATURE



**BOOK 1417**

Corner Name: EAST 1/4 Section: 26 T 14N R 70W; 6th P.M. Cross-Index No.: T-21

SBRPEPLS/PLSW: March 1994

**0993**